

# Cutting Costs in Enterprise Data Centers

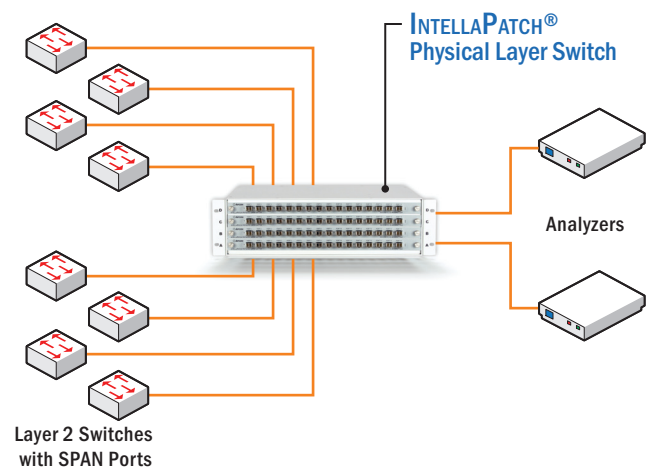
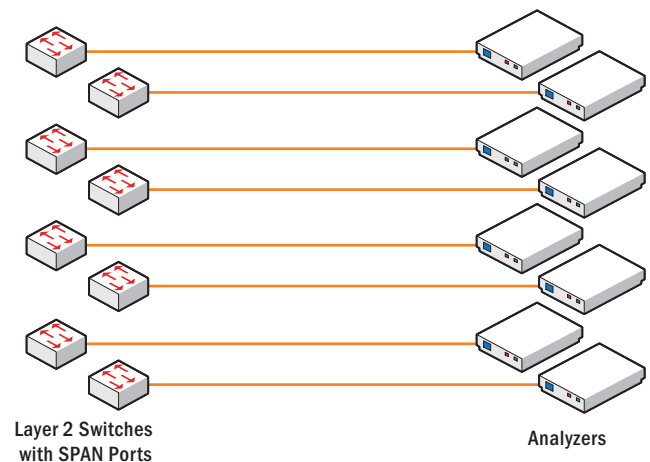
By Tim Kcehowski



## MATRIX SWITCH TECHNOLOGY CAN DELIVER SIGNIFICANT SAVINGS

Companies seeking to reduce monitoring costs in their data centers have a new ally. Matrix switching makes it possible to maintain complete network visibility, often at less than half the cost of standard monitoring solutions. If this seems incredible, consider this:

1. A matrix switch enables the electronic roving of network monitoring equipment, therein significantly reducing the number of devices needed to maintain 100 percent network visibility.
2. The need to constantly re-cable devices to diagnose network problems becomes a thing of the past. After initial switch setup, IT security personnel can manage the entire monitoring infrastructure remotely from a single screen – making device changes instantly.
3. Power consumption varies by data center, but it's not unreasonable for a company with hundreds of monitoring devices to spend over \$10,000 per month. Deploying fewer devices reduces both energy consumption and cooling costs.
4. Fewer monitoring devices equals fewer maintenance contracts. If the average annual contract ranges from 10 and 25 percent of the device cost, those savings quickly add up.



**Electronic Device Sharing Eliminates Redundant Monitoring and Security Devices.**

*Top and bottom: Conventional and more cost-effective monitoring configurations*

### About the Author

Tim Kcehowski is the East Coast business development manager for APCON, Inc.

As written for Data Center Management – September 2008