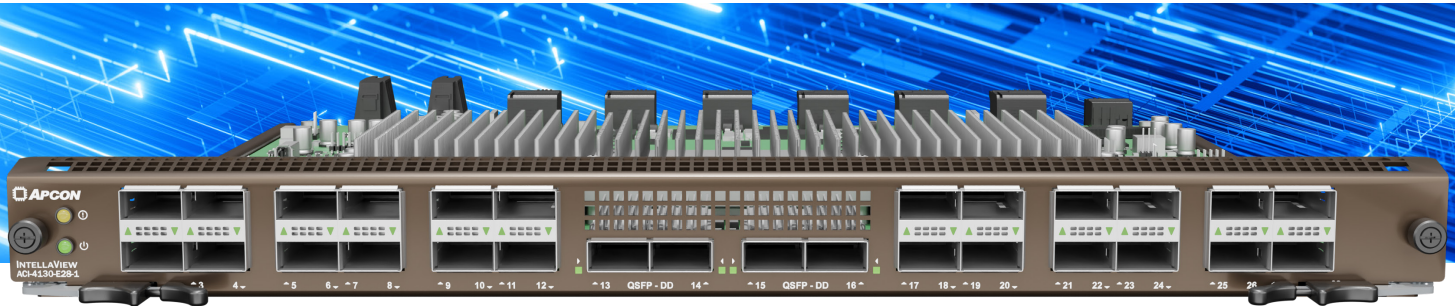


Intellaview 400G 28-Port Multi-Function Blade

GET ADVANCED MULTI-FUNCTION VISIBILITY AT 200G/400G



KEY FEATURES

28 Aggregation Ports:

4 QSFP-DD ports of up to 400G, and 24 QSFP ports of up to 200G, with multiple breakout modes.

Advanced Feature Module:

Intellaview ACI-4130-E28-2 blade includes a module that supports advanced services of Packet-Aware Slicing, Packet Deduplication, and Distributed Load Balance Groups (LBGs).

- 400G Deduplication:**
Enables high-speed removal of duplicate packets for optimizing traffic volume.
- Fast Traffic Optimization:**
400G Packet-Aware Slicing and other services mitigate tool oversubscription and dropped packets.
- Distributed LBGs:**
Allows an LBG to span multiple blades in a switch —also providing failover redundancy if a port/blade/appliance is out of service.

Enhanced Feature Module:

Intellaview ACI-4130-E28-3 blade includes a module that supports enhanced services allowing for concurrent Packet Deduplication and NetFlow Generation*.

CUSTOMIZE YOUR VISIBILITY SOLUTIONS

The Intellaview platform is expanding its next-generation blade portfolio to meet future needs of aggregating 400G traffic flows. APCON introduces the **Intellaview 28-port multi-function blade**—offering multiple-speed performance options for data centers needing 28 ports of standard, advanced, and ultra-high-speed optimization. This security visibility blade combines APCON's world-class packet aggregation and filtering technology with advanced features such as Load Balancing, Port Tagging, Protocol (Header) Stripping, Tunnel Management, and Packet Slicing. Network engineers gain visibility into network issues in real time for earlier security threat detection, investigation, and response.

HIGH-SPEED PACKET MONITORING

The **Intellaview ACI-4130-E28-1** blade includes 4 ports of 40G/100G/200G/400G QSFP-DD Ethernet and 24 ports of 40G/100G/200G QSFP Ethernet. These high-speed ports allow for precise network traffic monitoring. All of the 28 ports include features such as Traffic Aggregation, Filtering, Load Balancing, and Port Tagging. Advanced options include Protocol (Header) Stripping, Tunnel Management, and Packet Slicing supported at full line rate on every port.

The **Intellaview ACI-4130-E28-2** is an advanced version of the ACI-4130-E28-1 blade, with the addition of an Advanced Feature Module that powers the Distributed Load Balance Groups, Packet-Aware Slicing, and Packet Deduplication features at up to 400G of throughput. For high-speed processing that prolongs the life of network tools, reduces dropped packets, and optimizes storage capacities, the new Intellaview ACI-4130-E28-2 blade with the advanced feature module is a powerful network tool.

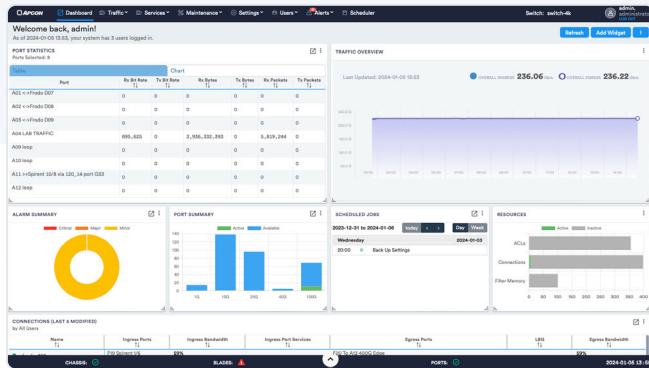
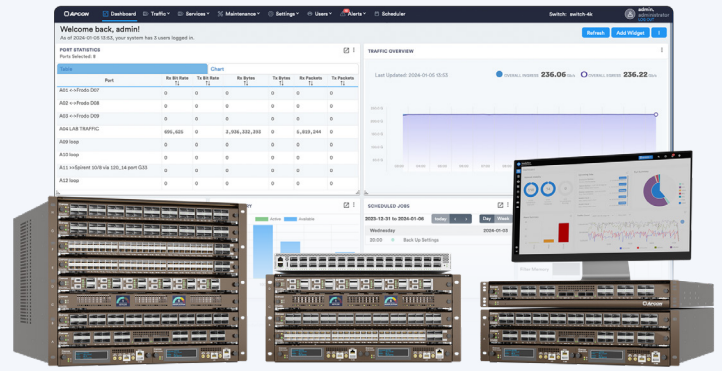
The **Intellaview ACI-4130-E28-3** blade is an advanced version of the ACI-4130-E28-1 blade, which includes an Enhanced Services Module that extends functionality up to 400G of processing power supporting Packet Deduplication and NetFlow Generation services at the same time.

EXPAND TOOL COMPATIBILITY WITH BREAKOUT MODE

The inevitable shift to faster processing speeds makes the Intellaview ACI-4130-E28 blade a great addition to any network data center. With 400G throughput, it puts most users ahead of the competition in processing speed. Further, APCON engineers realize security appliances are likely to be oversubscribed at 400G, so all 28 ports provide the flexibility to use breakout cables at 10G/25G/100G for better compatibility with your modern and legacy appliances.

CENTRALIZED VISIBILITY AT ENTERPRISE SCALES

The new IntellaView ACI-41 30-E28 blades connect perfectly to any switches and chassis from APCON's premier IntellaView network monitoring family to provide immediate growth and operational compatibility via GUI, REST API, or CLI. The IntellaView ACI-41 30-E28 blades and their internal settings can be managed from APCON's multi-switch software, **IntellaView Enterprise** — APCON's centralized switch management solution.



IntellaView Advanced Dashboard Screen**

BUILT-IN SWITCH MANAGEMENT

The new admin IntellaView ACI-41 30-E28 blades are managed with the pre-loaded web-based IntellaView GUI from the switch, which is the same interface used to manage all IntellaView products with features including:

- Easy setup of port aggregations, port tagging, load balancing, and ingress port filters
- Visual displays for port statistics
- System views and alerts
- Easy installation of software upgrades
- For efficient multi-blade management, use IntellaView Enterprise

EXTENDING NETWORK TOOL LIFESPAN

The new IntellaView ACI-41 30-E28 blades provide network operations teams with optional port speeds ranging from 10G to 400G. Speed variations allow legacy security and monitoring appliances to stay in service rather than be replaced with expensive, faster upgrades. A new single-processing chip structure brings unimpeded communication between all ports of the blade. This improvement simplifies the setup of connections for Load Balancing and distribution of traffic to network monitoring and security tools.

The IntellaView ACI-4130-E28 blades help to easily aggregate traffic from distributed switches into the **IntellaView platform** running your network management tools, allowing network and security teams to bring the right traffic to your applications.

ACI-4130-E28 SPECIFICATIONS

Interface (Ports) 4 QSFP-DD ports of 40G/100G/200G/400G

Breakout Modes:

- 8 breakout ports (2 x 100G)
- 16 breakout ports (4 x 10G/25G/50G/100G)
- 32 breakout ports (8 x 10G/25G/50G)

24 QSFP ports of 40G/100G/200G

Breakout Modes: 96 breakout ports (4 x 10G/25G/50G)

Compatible Transceivers: QSFP+, QSFP28, QSFP56

Packet Processing Services

ACI-4130-E28-1 IntellaView 28-Port Blade

Basic Services: ACL Filtering, Port Tagging

Advanced Services: Protocol (Header) Stripping, Tunnel Management, Packet Slicing

ACI-4130-E28-2 IntellaView 28-Port Blade with Advanced Feature Module (400G throughput)

Advanced Services: Protocol (Header) Stripping, Tunnel Management, Packet Slicing, Packet Deduplication, Packet-Aware Slicing, Distributed LBG

Services that can be combined on this blade:

- Packet Deduplication/Packet-Aware Slicing
- Distributed LBG/Deduplication
- Distributed LBG/Packet-Aware Slicing
- Distributed LBG/Deduplication/Packet-Aware Slicing

ACI-4130-E28-3 IntellaView 28-Port Blade with Enhanced Feature Module (400G throughput)

Advanced Services: Protocol (Header) Stripping, Tunnel Management, Packet Slicing, Packet Deduplication, NetFlow Generation

Services that can be combined on this blade:

- Packet Deduplication/NetFlow Generation*

*Preliminary - Features and specifications subject to change

**IntellaView Advanced is an upgraded support model of IntellaView GUI